



GMT MONTHLY MEMBERSHIP PROGRESS REPORT

Results as of: 8/31/2024

Multiple District 201

LOCATION: AUSTRALIA

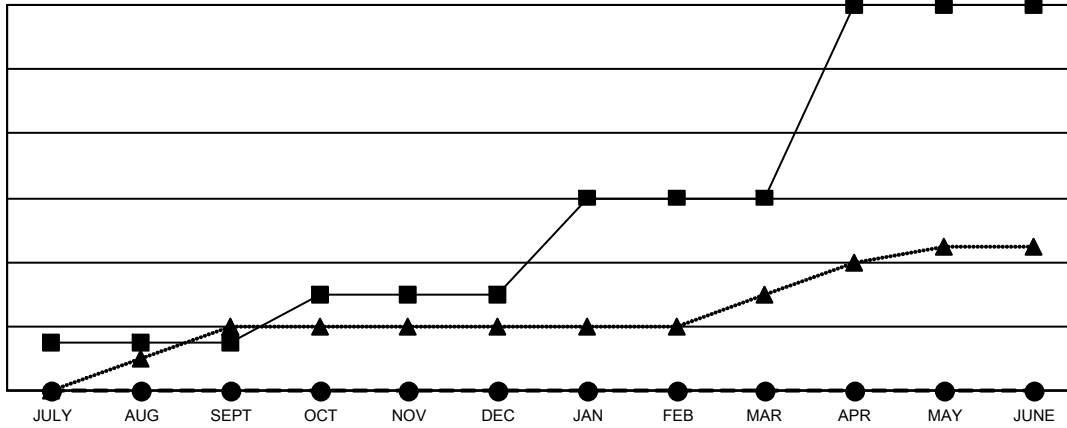
GMT: OPEN

GMT CA 7

| Clubs | | | |
|-----------------------|---------------|-----------|---------------|
| RESULTS FOR 2024-2025 | | | |
| QUARTER | NEW CLUB GOAL | NEW CLUBS | DROPPED CLUBS |
| JULY/AUG/SEPT | 3 | 0 | 10 |
| OCT/NOV/DEC | 3 | 0 | 0 |
| JAN/FEB/MAR | 6 | 0 | 0 |
| APR/MAY/JUNE | 12 | 0 | 0 |

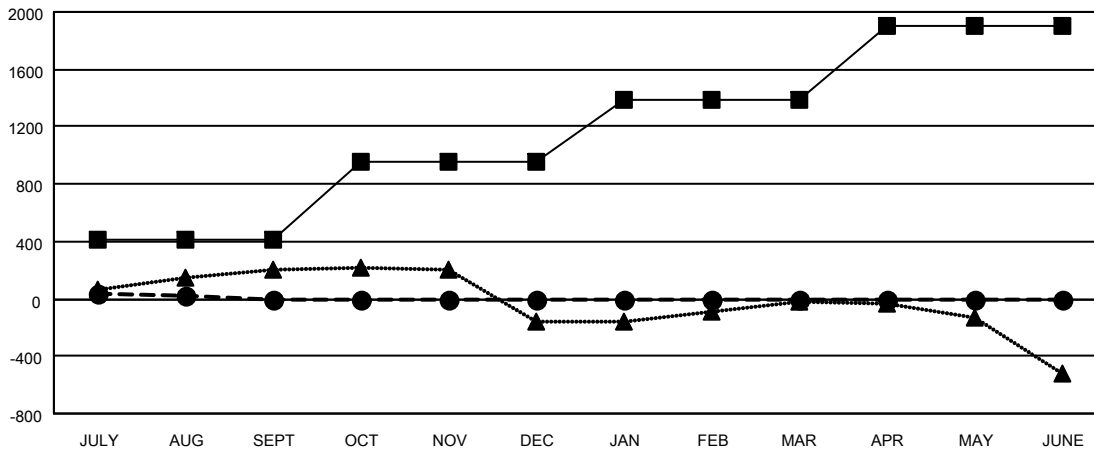
| Members | | | |
|-----------------------|------------------------|----------------------|--|
| RESULTS FOR 2024-2025 | | | |
| QUARTER | MEMBER GROWTH NET GOAL | MEMBER GROWTH ACTUAL | DROPPED MEMBERS ACTUAL (including transfers) |
| JULY/AUG/SEPT | 415 | 514 | 425 |
| OCT/NOV/DEC | 537 | 0 | 0 |
| JAN/FEB/MAR | 430 | 0 | 0 |
| APR/MAY/JUNE | 515 | 0 | 0 |

GOALS AND ACTUAL NEW CLUBS CUMULATIVE



- - CURRENT YEAR GOALS FOR NEW CLUBS
- - CURRENT YEAR ACTUAL NEW CLUBS
- ▲ - LAST YEAR ACTUAL NEW CLUBS

GOALS AND ACTUAL MEMBERS CUMULATIVE



- - MEMBER GROWTH NET GOAL
- - MEMBER GROWTH ACTUAL
- ▲ - LAST YEAR MEMBERSHIP ACTUAL

| | | |
|------------------------|---|---------------------------------------|
| DROPPED CLUBS: 10 | 238 CLUBS OF 1136 ADDED 1 OR MORE NEW MEMBERS | GENDER DISTRIBUTION |
| | | MALE 13,572 (61.35%) |
| | | FEMALE 8,552 (38.65%) |
| DROPPED MEMBERS | CLICK HERE FOR CUMULATIVE MEMBERSHIP DATA | TOTAL FAMILY UNIT MEMBERS 3,407 |
| DECEASED 58 | | FAMILY MEMBERS PAYING HALF DUES 1,749 |
| CLUB CANCELLED 0 | | |
| OTHER 353 | | |
| TOTAL 411 | | |